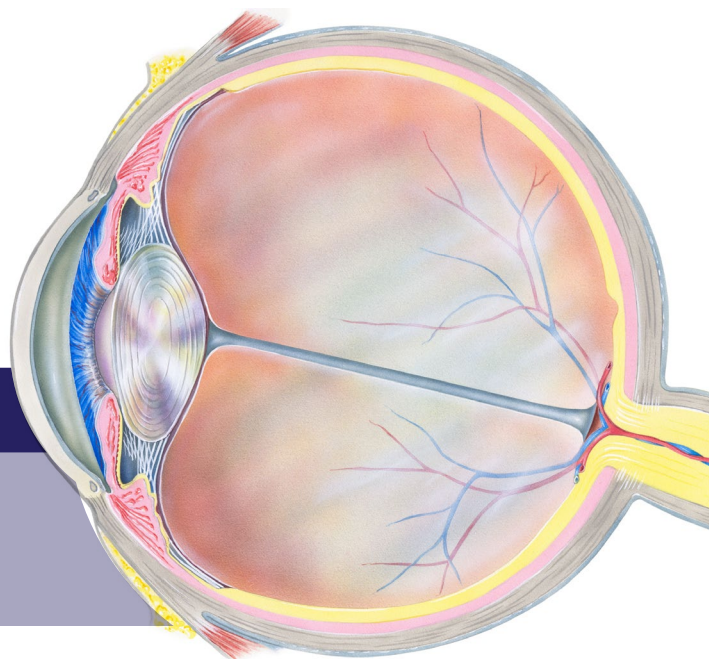


# Understanding **DIABETIC** RETINOPATHY



## What is diabetic retinopathy?

**Diabetic retinopathy** causes damage to tiny blood vessels inside the retina. It can lead to vision loss and blindness in diabetic patients.

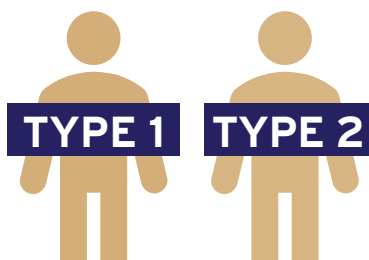
### Why should you care?

Diabetic retinopathy starts with no or mild vision problems.

There are typically **no symptoms** or pain in early stages.

It is the **leading cause of blindness** in adults ages 20–74.

## WHO IS AT RISK?



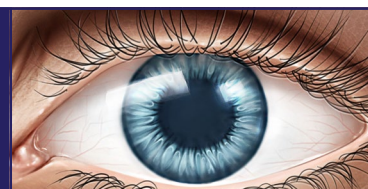
## ALL PEOPLE with diabetes are at risk.

## Protect your vision.



### Get a diabetic eye exam every year.

Early detection and treatment can reduce the risk of severe vision loss **by 95%!**



### Contact your doctor immediately

if you have sudden changes in your vision.

**Manage your A1C** (blood sugar or glucose), blood pressure and cholesterol to help prevent eye diseases and other diabetes problems.

